

FABACEAE

A NEW SPECIES OF *COELIDIUM* (LIPARIEAE)

Of the twenty known species of the genus *Coelidium* Vog. ex Walp., seventeen have white, pink or purple flowers and only three are yellow-flowered (Granby 1980, 1987). A new species with ivory-yellow flowers was discovered recently.

Coelidium vlokii Schutte & Van Wyk, sp. nov., *C. obtusilobo* Granby valde affinis sed habitu valde maiore robustiore, floribus maioribus cremeis (in *C. obtusilobo violaceis*), apice carinae (rostro) purpureo atque lobis calycis acutis (non obtusis), glabris (in *C. obtusilobo sericeis*) differt.

TYPE.—Cape Province, 3323 (Uniondale): Uniondale commonage, S aspect of Fortkoppie, (-CA), 19-09-1990, Schutte 665 (PRE, holo.; BOL, JRAU, K, NBG, iso.).

Virgate multistemmed shrublet up to 1.0 × 0.8 m, sprouting from a woody rootstock. Branches slender, densely leafy; sericeous when young, glabrescent. Leaves alternate, sessile, simple, erect, linear to narrowly oblong with strongly involute margins, non-twisting, (2-)3(-7) mm long, up to 1 mm wide; apex acute; densely sericeous adaxially, glabrescent abaxially. Stipules minute. Inflorescences bifloral, decussate, axillary, aggregated in terminal clusters of up to 8 flowers. Bracts lanceolate, 1.5-2.0 × 1.0 mm, glabrescent; margins thinly silky. Bracteoles absent. Flowers sessile, 7-9 mm long, ivory-yellow with purple keel tip; glabrous. Calyx 5 mm long, greenish-

yellow, tubular with prominent basal hypanthium; upper two lobes fused higher up, glabrous; lateral and lower sinuses of equal depth; lobes triangular, acute, margins ciliate. Standard 7.0-8.5 × 5.0 mm; lamina widely obovate; apex emarginate; base somewhat indented; claw ± 2 mm long. Wing petals slightly longer than keel, 7 × 2 mm; lamina oblong to narrowly oblong, with distal part imbricate, pocketed; sculpturing upper central, 2 rows of intercostal lunae; claw ± 2 mm long. Keel petals 6.5 mm long, lamina half oblong-elliptic, auriculate, distinctly pocketed; apex obtuse; claw ± 2.5 mm long. Stamens 6.5 mm long; monadelphous, 4 short and 6 long filaments fused for ± 1/3 the length; anthers varying in size, alternately dorsifixed and sub-basifixed. Pistil ± 7 mm long, sessile; style slender, slightly upcurved, glabrous; ovary uni-ovulate, densely sericeous. Young pods 8-9 × 4 mm, ovate, sericeous. Figure 5.

Judged by morphological similarities, the closest relative of *C. vlokii* is probably *C. obtusilobum* Granby, a species known only from the type specimen collected on the Kamiesberg in Namaqualand. *C. vlokii* differs from the latter in the larger and more robust habit, the larger cream-yellow flowers with only the tip of the keel purple (flowers uniformly violet in *C. obtusilobum*), the glabrous calyx (sericeous in *C. obtusilobum*) and the acute calyx lobes (distinctly obtuse in *C. obtusilobum*).

C. vlokii is known only from the type locality at Uniondale in the southern Cape Province (Figure 6), where it

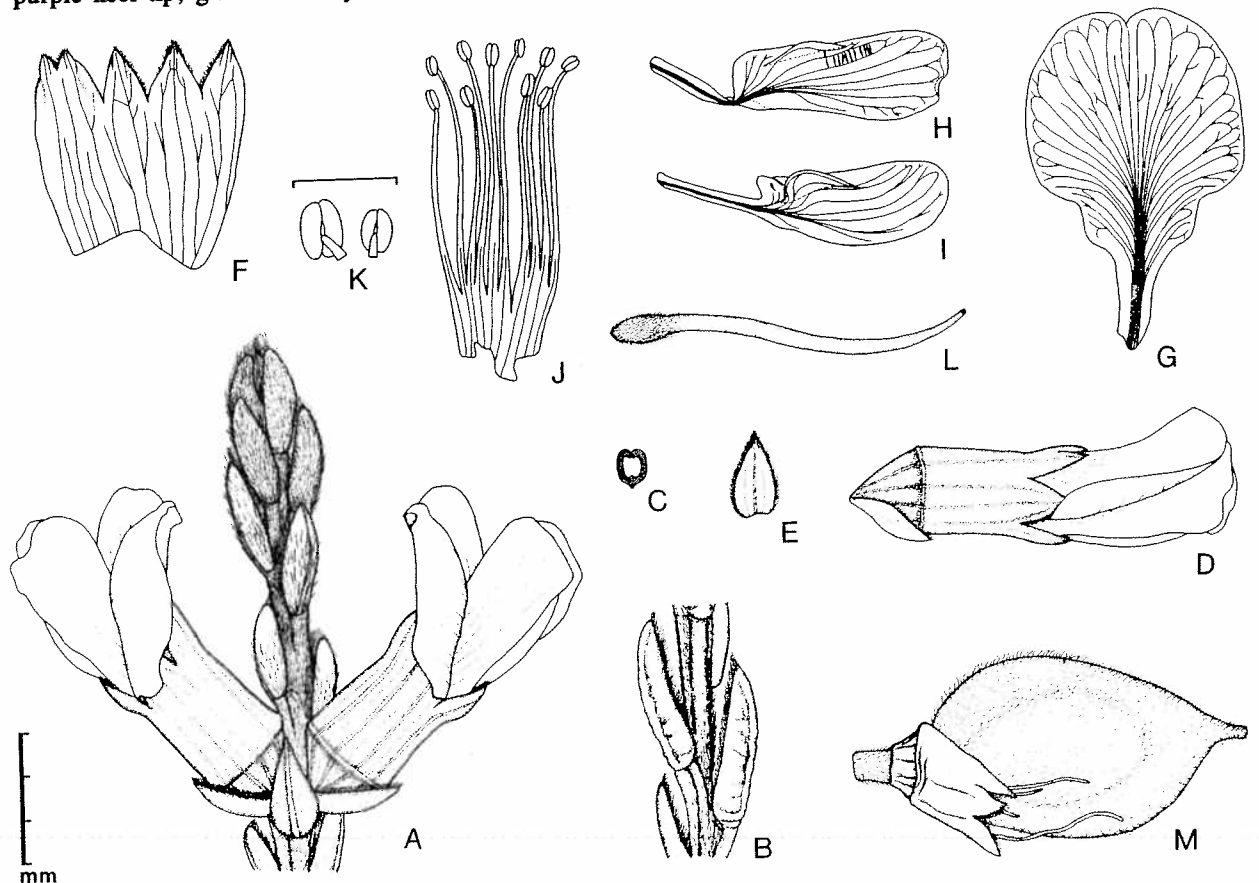


FIGURE 5.—*Coelidium vlokii*. A, flowering twig with young leaves, showing sessile flowers; B, mature leaves; C, leaf in transverse section, showing involute margins; D, flower in lateral view; E, bract; F, calyx opened out with upper lobes to the left; G, standard petal; H, wing petal; I, keel petal; J, stamens; K, anthers; L, pistil; M, young pod in lateral view (note that a short pedicel develops in the fruiting stage).

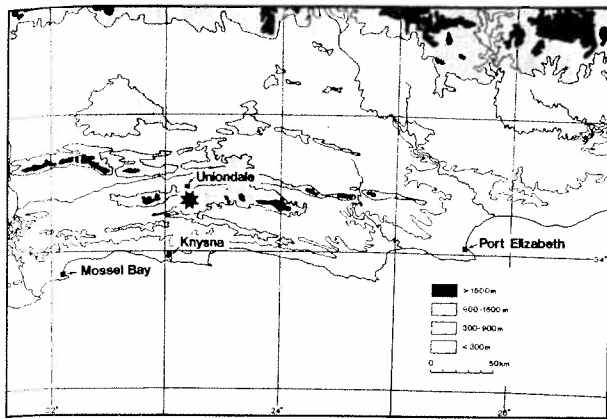


FIGURE 6.—The known geographical distribution of *Coelidium vlokii*.

is locally common in *Elytropappus-Erioccephalus* veld on clayish soil.

This distinct new species is named after Mr J.H.J. Vlok (Cape Department of Nature and Environmental Conser-

vation), who has collected several rare and unknown legumes in recent years.

CAPE.—3323 (Uniondale): Uniondale commonage, S aspect of Fortkoppie, (—CA), 19-09-1990, *Schutte* 665 (PRE, holo.; BOL, JRAU, K, NBG, iso.), 19-09-1990, *Schutte* 661–664 (JRAU), 21-09-1991, *Schutte* 729 (JRAU); 1 km S of Uniondale, along road in poort, (—CA), 01-11-1990, *Van Tonder* 79 (JRAU).

REFERENCES

- GRANBY, R. 1980. A revision of the genus *Coelidium* (Lipariae—Fabaceae). *Opera Botanica* 54: 1–47.
GRANBY, R. 1987. *Coelidium flavum*, a new species of Fabaceae—Lipariae from the Cape Province. *Nordic Journal of Botany* 7: 51, 52.

A.L. SCHUTTE* and B-E. VAN WYK*

* Department of Botany, Rand Afrikaans University, P.O. Box 524, Johannesburg 2000.
MS. received: 1991-11-22.

FABACEAE

LESSERTIA SNEEUWBERGENSIS, A NEW SPECIES FROM THE MIDDELBURG DISTRICT OF THE CENTRAL CAPE PROVINCE

Lessertia sneeuwbergensis *Germishuizen*, sp. nov., *L. cryptanthae* Dinter affinis, sed longitudine calycis florumque, magnitudine et forme fructus, floribus ex axillis foliorum summorum ortis, atque seminis multis in quoque fructu differt.

TYPE.—3124 (Hanover): Middelburg District, Gordonville, Sneeuwberge, (—DA), 1952-10-28, *Acocks* 16536 (PRE, holo.).

Small, erect annual herb 30–200 mm high. *Stems* much branched from base, yellow-brown, strigose, with scattered white hairs. *Taproot* slender, simple or branched, up to 200 mm long, up to 3 mm thick at base. *Stipules* paired, obliquely ovate, acute, up to 2.0 mm long, white, strigose along margins. *Leaves* variable; leaflets usually solitary, terminal, rarely up to 4, in short-stalked, opposite to subopposite pairs, linear, 2.0–12.0 (—14.0) × 1.0–1.5 mm, acute or obtuse at apex, obtuse at base, strigose, with white hairs on both surfaces; *petioles* up to 65 mm long, strigose, with scattered white hairs. *Inflorescence* few-flowered, pedunculate axillary raceme, bracteate. *Bracts* broadly ovate, acute, strigose, brown hairs intermixed with white hairs, especially at apex and along margins; bracteoles present, small, up to 0.5 mm long. *Flowers* small, flower colour not known. *Calyx* campanulate, 3–4 mm long, subequal, 5-toothed, densely brown, strigose, with a few white hairs intermixed. *Vexillum* broadly obovate, shallowly bilobed, up to 9 × 6 mm, glabrous. *Wing petals* narrowly elliptic, shorter than keel, up to 8 × 2 mm, with little sculpturing. *Keel petals* oblong obtuse, up to 9 × 4 mm; auricle and pocket absent. *Staminal sheath* up to 8 mm long, persistent in fruit; anthers uniform. *Style* hooked, with conspicuous tuft of white hairs behind stigma, persistent in fruit. *Pods* inflated, broadly oblong ovoid, 14–24 × 9–12 mm, yellow-brown, sometimes mottled with purple, glabrous, conspicuously veined. *Seeds* broadly reniform or 'U'-shaped, yellow-brown, slightly wrinkled, up to ± 17 per pod. Figure 7.

CAPE.—3124 (Hanover): Oppermanskraal, Sneeuwberge, (—BA), 1952-10-28, *Acocks* 16516 (PRE); Gordonville, Sneeuwberge, (—DA),

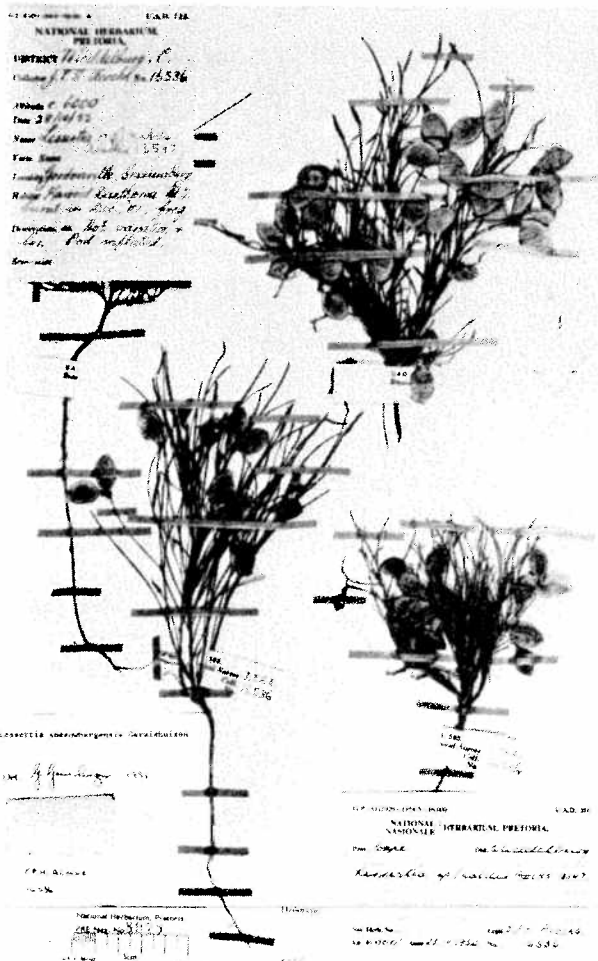


FIGURE 7.—Holotype of *Lessertia sneeuwbergensis*, *Acocks* 16536.